

Challenging Limits...Changing Lives

SUMMER SEASON

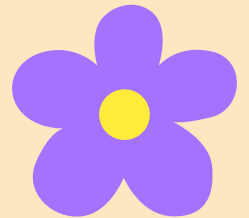
WEEKLY PROGRAMS

June 8 - July 31, 2026



SRS

Special Recreation Services
of Sertoma Star Services



Register
Now!



SRS South Campus Office
2550 178th Street
Lansing, IL 60438

SPECIAL RECREATION SERVICES (SRS) OF SERTOMA STAR SERVICES

SRS is a special recreation cooperative of Broadview, Calumet Memorial, Dolton, Lan-Oak, Riverdale Park Districts, the Village of South Holland Recreational Services Department, and Sertoma Star Services.

Sertoma Star Services is a 501(c)3, not-for-profit organization dedicated to challenging limits and changing the lives of people with intellectual and developmental disabilities. SRS was organized to provide year-round, community-based leisure education and recreational services for persons with disabilities.

South Campus

Lan-Oak Park District

2550 178th Street

Lansing, IL 60438

708-474-8552

North Campus

Beverly Center

3065 S. 25th Avenue

Broadview, IL 60155

708-410-0182



SRA STAFF

Michael McNicholas, CTRS, MPA

Executive Director

mmcnicholas@sertomastar.org

708-207-0023

Shevon Reed, CTRS, CDP

Program Manager

sreed@sertomastar.org

708-955- 8517

Jennifer Eng, MPH

Recreation Supervisor

jeng@sertomastar.org

708-466- 5821

SRA MEMBER DISTRICTS

Broadview Park District (North Campus)

Darion Hills, Executive Director

Calumet Memorial Park District

Hollice Clark, Executive Director

Dolton Park District

Lounette Hall, Executive Director

Lan Oak Park District

Michelle Havran, Superintendent of Strategy and Operations

Riverdale Park District

Cynthia Gilmore, Administrator

Village of South Holland Recreational Services Department

Edward Stewart,

Director of Recreational Services

Sertoma Star Services

Kelly Berardelli, President/CEO

WEEKLY PROGRAMS

Looking to add something fun to your week?

Our weekly programs offer new friends, new experiences, and plenty of movement — all in a welcoming, inclusive, and engaging environment. Come discover what makes our community shine!

FINTASTIC FRIENDS

Come out and join us for a youth swim program that encourages younger participants to learn skills in the water and socialize with peers.



When: Mondays, June 8 – July 27

Time: 5 – 5:50 p.m. **Ages:** 6-12

Fee: \$45 **Min/Max:** 4/10

Where: South Holland Community Center

SPLASH SQUAD

Join us to experience the joy, freedom, and confidence that comes from being in the water. We provide a safe, supportive, and adaptive environment for teen and adult swimmers to learn skills and engage in social games and activities.

When: Mondays, June 8 – July 27

Time: 6 – 6:50 p.m. **Age:** 13+

Fee: \$45 **Min/Max:** 4/10

Where: South Holland Community Center



TRAIL BLAZERS

This club creates a welcoming, supportive space where people of all abilities can enjoy movement, build confidence, and make lasting friendships. Whether participants use mobility aids, prefer a slower pace, or simply want a social way to stay active, everyone is encouraged to join at their own comfort level.

In inclement weather, we will walk at the South Holland Walking Track.



When: Mondays, June 8 – July 27

Time: 5 – 5:45 p.m. **Ages:** All

Fee: \$45 **Min/Max:** 4/10

Where: Dolton Park District

*****Volleyball to start from Aug 10 to Oct. 12, 6 – 7:30 p.m. Min/Max: 6/12*****

CREATIVE CORNER

Are you bursting with creativity? Here's your chance to let your creativity flag fly! Each week we will create new masterpieces as we discover different mediums of art expression. All ages and abilities welcome.



When: Tuesdays, June 9 – July 28

Time: 5 – 6 p.m.

Fee: \$50

Ages: All

Min/Max: 4/10

Where: Riverdale Park District– Ivanhoe Field House



BOWLING



JUNIOR PIN PALS

Nothing to do with your spare time? Try your hand at the target sport of Bowling! All skill levels are welcome. Weekly program includes two games, or an hour, whichever comes first.

When: Wednesdays,

June 10 - July 29

Time: 4 - 5 p.m.

Ages: 6 - 12

Fee: \$50

Min/Max: 4/10

Where: Dolton Bowl

PIN PALS

Let's hit the lanes and strike up some good times with a spirited game of ten-pin! All skill levels are welcome. Weekly program includes two games, or an hour and a half, whichever comes first.

When: Wednesdays,

June 10 - July 29

Time: 5 - 6:30 p.m.

Ages: 13+

Fee: \$50

Min/Max: 4/10

Where: Dolton Bowl

SPECIAL OLYMPICS BOWLING

Lace up your bowling shoes, and get ready for this summer's competition. Weekly practices will focus on bowling skills and following Special Olympics Bowling protocols. Registration cost includes Regional Tournament fees and tournament shirt.

***Region E Tournament slated for August 29.**



When: Thursdays, June 11 - Aug 27

Time: 4 - 5:30 p.m. **Ages:** 13+

Fee: \$100 **Min/Max:** 4/10

Where: Lynwood Bowling Center
Lynwood, IL

TASTE BUDS

Get ready to create unforgettable dishes, and bond like never before! Be sure to bring your appetite and good vibes while we make dinner together!

When: Thursdays

June 11 & 25

July 9 & 23

Time: 6 - 8 p.m.

Ages: 13+

Fee: \$65 **Min/Max:** 4/10

Where: Lan-Oak Park District-
Eisenhower Center



FRIDAY NIGHT SOCIALITES

TGIF!

Our Friday Night Socialites Program offers teens and adults with disabilities a safe, fun way to connect, build friendships, and explore the community.

From outings and activities to games and social events, it's a great way to gain independence, stay active, and have a blast with friends.

Let's have Friday's full of laughter, learning, and lasting memories!

PLEASE SEE OUR LIST OF OFFERINGS BELOW AND REGISTER FOR AS MANY FRIDAY NIGHTS AS YOU'D LIKE. REGISTRANTS MUST BE 16 YEARS OF AGE OR OLDER.

****REGISTRATION DEADLINE FOR ALL FRIDAY NIGHT SOCIALITES IS JUNE 5, 2026****



| FRIDAY NIGHT SOCIALITES | LOCATION | FEE |
|---|---|---|
| <p>June 12 Ice Cream Sandwich Social Come on, summertime! Tonight we're kicking off the summer season with hand-made ice cream sandwiches! Bring your sweet tooth and your creativity!</p> | <p>Riverdale Park District Riverdale, IL 6-8 p.m.</p> | <p>\$25 Min/Max: 4/12</p> |
| <p>June 19 - NO FRIDAY ACTIVITIES TODAY</p> | | |
| <p>June 26 Friday Night Lights- SWSRA Tonight is going to be LIT! We're hanging out with our SRA friends, and dancing under the Friday night lights. Snacks and transportation included with registration.</p> | <p>Calumet Memorial Park District Calumet City, IL 6-9:30 p.m.</p> | <p>\$25 Min/Max: 4/12</p> |
| <p>July 3 - NO FRIDAY ACTIVITIES TODAY</p> | | |
| <p>July 10 Hawaiian Luau- NWCSRA Let's grab our friends and floral shirts, and head to the Hawaiian Luau dance! We'll take a trip to paradise, and dance the night away with our SRA friends. Dinner and transportation included with registration.</p> | <p>Calumet Memorial Park District Calumet City, IL 5-9:30 p.m.</p> | <p>\$45 Min/Max: 4/12</p> |

| FRIDAY NIGHT SOCIALITES | LOCATION | FEE |
|---|---|---|
| <p>July 17 Pizza & Bingo Feeling lucky tonight? Try your hand at this classic game of chance, and see your luck prevail! Pizza, pals, and prizes included with registration.</p> | <p>Calumet Memorial Park District Calumet City, IL 6-8 p.m.</p> | <p>\$25 Min/Max: 4/12</p> |
| <p>July 24 Open Mic Night Give us your best stand-up comedy routine, or sing your favorite karaoke tunes! Snacks, drinks, and good vibes provided.</p> | <p>Eisenhower Center Lansing, IL 6-8 p.m.</p> | <p>\$25 Min/Max: 4/15</p> |
| <p>July 31 Windy City Thunderbolts Game Take me out to the ball game! Tonight we'll root for our home team as they take on the Evansville Otters. After we score the win, we'll stay to watch the postgame fireworks. Game admission and transportation included with registration. Please bring money for concessions.</p> | <p>Calumet Memorial Park District Calumet City, IL 5:30-9 p.m.</p> | <p>\$30 Min/Max: 4/12</p> |
| <p>August 7 Movie Night Relax with friends while enjoying a Friday Night flick. Movie admission included with registration, please bring money for concessions. <i>*Participants will be notified of movie and time, the day prior to program.</i></p> | <p>Marcus Theatres Country Club Hills, IL 5-8 p.m.</p> | <p>\$25 Min/Max: 4/12</p> |



Sundae Saturday!



Join us for our sweet Sundae Saturday program, where we will visit local ice cream shoppes, enjoy weekend time together, and eat a delicious treat!


Registration fee includes cost of sundaes for participants.

When: Saturdays, June 13 & 27, July 11 & 25

Time: 12 p.m. - 1 p.m.

Ages: 13+ **Fee:** \$50 Min/Max: 4/8

Where: Various Ice Cream Shoppes



SPECIAL EVENTS

DEEP RIVER WATER PARK- AUGUST 9

Water slides, lazy rivers, and wave pools are the best part of summer!

Grab a friend, and join us for a splashtastic day at the water park!

Water park admission, and transportation included with registration.

Please bring money for lunch.

Time: 9:30 a.m.- 2:30 p.m.

Ages: 13 +

Fee: \$60 **Min/Max:** 6/15

Leave from: Calumet Memorial Park District, Calumet City, IL

MINI GOLF & SNACKS- AUGUST 15

Ready for a little fun on the range? Join us for a friendly game of putt-putt at Memorial Park! Afterwards, we'll enjoy summer eats at the Snack Shack!

Registration includes mini golf game and snacks.

Time: 12- 2 p.m.

Ages: 6- 12 years old.

Fee: \$25 **Min/Max:** 4/10

Where: Memorial Park, Calumet City, IL

SPECIAL EVENTS

SHOPPING & LUNCH- AUGUST 19

Looking for new Fall threads? Score awesome deals and steals at Lighthouse Place Premium Outlets! We'll shop for cool finds, then enjoy a nice lunch at a restaurant nearby. Transportation and lunch included with registration. Please bring money for mall purchases.

Time: 10 a.m.- 4 p.m.

Ages: 13 +

Fee: \$60 **Min/Max:** 6/15

Leave from: Calumet Memorial Park District, Calumet City, IL

WATERMELON FESTIVAL- AUGUST 30

Summer isn't over yet, so let's indulge in one of the season's sweetest treats- the annual Watermelon Festival at Johnson's Farm Produce! Afterwards, we'll stop for lunch at a nearby restaurant. Lunch and transportation included with registration. Please bring money for watermelons and souvenirs.

Time: 10 a.m.- 3:30 p.m.

Ages: 13 +

Fee: \$50 **Min/Max:** 4/10

Leave from: Calumet Memorial Park District, Calumet City, IL

COMMUNITY INCLUSIVE EVENTS

SRS staff will be on hand to support our group engaging with the rest of the community within these events.

MOVIE IN THE PARK

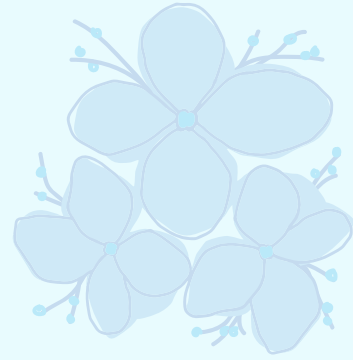
When: August 5

8:30- 10 p.m.

Where: Dolton Park District

Ages: All

***Movie selection TBA**



KAYAKING IN MAYWOOD

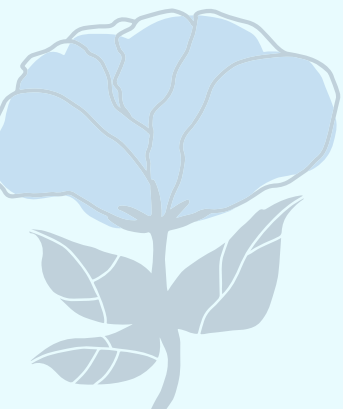
When: Sunday, July 26 and Sunday, August 2

(Sign up for either or both days!)

Ages: 15+

**Where: Schuth's Grove, 8040 Cermak Rd,
Forest Park, IL 60546**

Info: Jen Eng @ (708) 466-5821



SPECIAL RECREATION SERVICES OF SERTOMA STAR SERVICES 2026 PROGRAM REGISTRATION

SRS requires that the following form be updated annually or due to a change in participants' health. Please complete this form entirely, and return it with payment.

You must have a current registration to participate in any SRS activities.

All information is confidential.



Participant Information:

Name: _____

Date of Birth: _____ Photo permission: Yes / No

Address: _____

City: _____ State: _____ Zip Code: _____

Primary Phone: _____ Cell Phone: _____

Park District: _____ Group Home: _____

Parent/Guardian Information:

Name: _____

Address: _____

City: _____ State: _____ Zip Code: _____

Primary Phone: _____ Cell Phone: _____

Email: _____

Emergency Contact Information:

Name: _____ Relationship: _____

Phone 1: _____ Phone 2: _____

Medical Information:

Physicians Name: _____

Hospital: _____ Phone: _____

Primary Diagnosis: _____

Secondary Diagnosis: _____

Tertiary Diagnosis: _____

Seizure Disorder/Type: _____

Frequency: _____ Duration: _____

Seizure Trigger/Warning Signs: _____

Other Impairments: _____

Allergies: _____

Medication (type, dose, and frequency) use separate sheet if needed:

Adaptive Equipment Needs:

Dietary Restrictions:

Daily Living Skills (please circle):

Eating:

Independently

Needs Monitoring

Requires Assistance

Explain:

Bathroom:

Independently

Needs Monitoring

Requires Assistance

Explain:

Dressing:

Independently

Needs Monitoring

Requires Assistance

Explain:

Mobility:

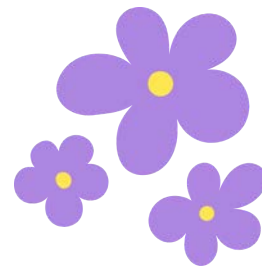
Independently

Walker Wheelchair

(manual or electric)

Can the participant transfer? Yes No

Is the participant clear of atlantoaxial instability (AAI)?: Yes No



SRS SOUTH 2026

Summer Program Registration

Please list each of the programs you are registering for below.

Payment is due upon registration.

| Program | Fee | Program | Fee |
|---------|-----|---------|-----|
| | | | |
| | | | |
| | | | |
| | | | |
| | | | |
| | | | |
| | | | |
| | | | |
| | | | |

TOTAL: _____ PAID: _____ BALANCE DUE: _____

SRS South Program Locations

**CALUMET MEMORIAL PARK
DISTRICT**

**612 WENTWORTH AVE
CALUMET CITY, IL 60409**

**DOLTON PARK DISTRICT
721 ENGLE ST**

DOLTON, IL 60419

**LAN-OAK PARK DISTRICT
2550 178TH ST**

LANSING, IL 60438

**RIVERDALE PARK DISTRICT
14401 S STEWART AVE**

RIVERDALE, IL 60827

**SOUTH HOLLAND COMMUNITY
CENTER**

**501 E 170TH ST
SOUTH HOLLAND, IL 60473**

SPECIAL REC SUMMER CAMP



\$900



June 22 – July 31, 2026
Mon – Friday, 9 a.m. – 3 p.m.

Activities Include:

- Nature Walks & Exploration
- Arts & Crafts
- Water Fun Days
- Friday Field Trips!

Register Now!

**Call Shevon Reed @
708-955-8517 for info!**

*****\$100 deposit is needed to secure
camper's spot*****

Camp Bright Horizons

- Age: 6-10 year olds
- Where: Riverdale Park District

Camp Explorers

- Age: 11-17 year olds
- Where: Calumet Memorial Park District

Camp Rise

- Age: 18+
- Where: Dolton Park District



SPECIAL RECREATION SERVICES OF SERTOMA STAR SERVICES 2026 SUMMER DAY CAMP REGISTRATION

SRS requires that the following form be updated annually or due to a change in campers' health. Please complete this form entirely, and return it with payment. All information is confidential.



Camper's Information:

Name: _____

Date of Birth: _____ Photo permission: Yes / No

Address: _____

City: _____ State: _____ Zip Code: _____

Primary Phone: _____ Cell Phone: _____

Park District: _____ Group Home: _____

Parent/Guardian Information:

Name: _____

Address: _____

City: _____ State: _____ Zip Code: _____

Primary Phone: _____ Cell Phone: _____

Email: _____

Emergency Contact Information:

Name: _____ Relationship: _____

Phone 1: _____ Phone 2: _____

Medical Information:

Physicians Name: _____

Hospital: _____ Phone: _____

Primary Diagnosis: _____

Secondary Diagnosis: _____

Tertiary Diagnosis: _____

Seizure Disorder/Type: _____

Frequency: _____ Duration: _____

Seizure Trigger/Warning Signs: _____

Other Impairments: _____

Allergies: _____

Medication (type, dose, and frequency) use separate sheet if needed:

Adaptive Equipment Needs:

Dietary Restrictions:

Daily Living Skills (please circle):

Eating:

Independently

Needs Monitoring

Requires Assistance

Explain:

Bathroom:

Independently

Needs Monitoring

Requires Assistance

Explain:

Dressing:

Independently

Needs Monitoring

Requires Assistance

Explain:

Mobility:

Independently

Walker Wheelchair

(manual or electric)

Can the participant transfer? Yes No

Is the participant clear of atlantoaxial instability (AAI)? Yes No

SRS South Summer Day Camp Locations

CAMP EXPLORERS

**CALUMET MEMORIAL PARK
DISTRICT**

**612 WENTWORTH AVE
CALUMET CITY, IL 60409**

CAMP RISE

DOLTON PARK DISTRICT

**721 ENGLE ST
DOLTON, IL 60419**

CAMP BRIGHT HORIZONS

RIVERDALE PARK DISTRICT

**14401 S STEWART AVE
RIVERDALE, IL 60827**

Registration Information

Contact Program Manager **Shevon Reed** (sreed@sertomastar.org) to schedule an appointment to register for programs. Complete the Annual Information Form, filling in all appropriate spaces. Annual Information Forms are due at the time of registration.

Program Registration:

Cash, credit card, and checks accepted. Please make checks out to Sertoma Star Services, and write the participant's name on the check. Full payment must be included. You will be notified if a program is canceled or if a participant is placed on a waiting list.

Delinquent Accounts:

Participants will be denied participation if a balance remains from a previous season, or a late pick-up fee has not been paid. For participants attending a program without prior registration and payment, a \$10 administrative fee will be added to each program that is attended. This fee must be paid in full before registration can be taken.

PROGRAM CANCELLATION AND CREDIT POLICY

Program Information

- If no participants arrive within the first 15 minutes at the scheduled program time, the program will be canceled, and staff will be sent home. No credits will be given.
- If the program is canceled, program staff will attempt to reach all participants by phone and email to inform them.
- SRS attempts to extend programs to make up missed dates. You will be notified of program extensions.

All credits/refunds will be reviewed and disbursed after review by the Executive Director.

Please note that a doctor's note may be required with the credit request.

Once a program has begun, no credits will be given.

Out-of-district participants include those not part of the member districts, the corresponding school district, or affiliation with Sertoma Star Services. SRS will accept out-of-district participants into our program with the registration and payment of a \$1,200 annual maintenance fee.

This fee, paid to SRS, can be made in installments or all at once. To pay in installments, you must make arrangements with the SRS Program Director.

For additional inquiries, please contact Michael McNicholas at mmcnicholas@sertomastar.org

Americans with Disabilities Act

Special Recreation Services of Sertoma Star Services supports the Americans with Disabilities Act (ADA).

SRS will provide all reasonable accommodations to include persons with disabilities in the community. It is the belief of SRS that all people are created equal and that they should have equal rights to recreation and leisure opportunities in their communities.

Inclusion

SRS supports programs that allow the participants to perform in the least restrictive environment. Some participants may choose traditional SRS programs, while others may choose park district and recreation department-offered programs. In cooperation with park district/recreation department staff, SRS will provide additional support for all persons interested in inclusion services in park district/recreation department programs. Contact SRS for additional information.



Sertoma Star Services has a rich history of providing state-of-the-art services and programs for individuals with intellectual/developmental disabilities and those living with mental illness. The organization has provided programs and services to individuals in and around the Chicagoland area and northwest Indiana for a collective 125-plus years.

We support more than 2,000 consumers and have three locations in Illinois – Alsip, Chicago Heights, and Matteson – and an office in Merrillville, Indiana. Our programs are driven by our passion for creating life-changing vocational, educational, therapeutic, and residential opportunities for those we serve.



SRS

Special Recreation Services
of Sertoma Star Services



SRS SOUTH Campus Office
2550 178th Street, Lansing, IL 60438

Serving the park districts of
Broadview, Calumet Memorial, Dolton, Lan-Oak,
Riverdale Park, and the Village of South Holland
Recreational Services Department

Visit us online at
sertomastar.org/specialrecreation

