

**Challenging Limits...Changing Lives**



# **SUMMER SEASON**

---

## **WEEKLY PROGRAMS**

**June to July 2026**

**6/8/26 - 7/31/26**



**REGISTER NOW!**

**SRS North Campus Office**  
Beverly Center  
3065 S. 25th Avenue  
Broadview, IL 60155  
(708) 466-5821

# SPECIAL RECREATION SERVICES (SRS) OF SERTOMA STAR SERVICES

---



SRS is a special recreation cooperative of Broadview, Calumet Memorial, Dolton, Lan-Oak, Riverdale Park Districts, the Village of South Holland Recreational Services Department, and Sertoma Star Services.

Sertoma Star Services is a 501(c)3, not-for-profit organization dedicated to challenging limits and changing the lives of people with intellectual and developmental disabilities. SRS was organized to provide year-round, community-based leisure education and recreational services for persons with disabilities.

## **South Campus**

**Lan-Oak Park District**

**2550 178th Street**

**Lansing, IL 60438**

**708-474-8552**

## **North Campus**

**Beverly Center**

**3065 S. 25th Avenue**

**Broadview, IL 60155**

**708-410-0182**



# SRA STAFF

---

**Dr. Michael McNicholas, CTRS**

**Executive Director**

[mmcnicholas@sertomastar.org](mailto:mmcnicholas@sertomastar.org)

708-207-0023

**Shevon Reed, CTRS, CDP**

**Program Manager**

[sreed@sertomastar.org](mailto:sreed@sertomastar.org)

708-955-8517

**Jen Eng, MPH**

**Special Recreation Supervisor**

[jeng@sertomastar.org](mailto:jeng@sertomastar.org)

708-466-5821

## SRA MEMBER DISTRICTS

---

Broadview Park District (North Campus)

Darion Hills, Executive Director

Calumet Memorial Park District

Hollice Clark, Executive Director

Dolton Park District

Louise Hall - Executive Director

Lan Oak Park District

Sharon Desjardins - Superintendent of Strategy and Operations

Riverdale Park District

Cynthia Gilmore, Administrator

Village of South Holland Recreational Services Department

Edward Stewart,

Director of Recreational Services

Sertoma Star Services

Kelly Berardelli, President/CEO

# WEEKLY PROGRAMS

## WALKING FOR FITNESS

We will walk a looped path at 26th St. Woods. Wear comfortable clothes and shoes and dress for the weather, as this is an outdoor program.

Please bring a water bottle!



**When:** Every other Monday  
6/8, 6/22, 7/6, 7/20

**Where:** 26th St., La Grange  
Park, IL 60526

**Min/Max:** 4/12

**Time:** 5–6 p.m.

**Age:** All

**Fee:** \$30

# SPECIAL OLYMPIC SPORTS

Our Special Olympic Sports program helps kids with disabilities work on specific team and individual sports skills in a supportive environment. With adapted games and encouragement from trained staff, every participant can move, play, and succeed—no matter their ability level.

**When:** Every other Monday 6/15, 6/29, 7/13, 7/27

**Where:** Beverly Center • **Min/Max:** 4/12

**Time:** 5–6 p.m. • **Ages:** 13+ • **Fee:** \$30



\*\*\*Volleyball Unified will start in August, where we will work on volleyball skills for participants with disabilities and without\*\*\*



# GARDEN GURUS

Join us at the park district garden for our inclusive Garden Gurus program! Kids and teens with disabilities will explore planting, watering, and caring for nature in a supportive, hands-on environment. We will also do story times, walks around the garden, and garden related crafts at the Beverly Center (weather permitting)!

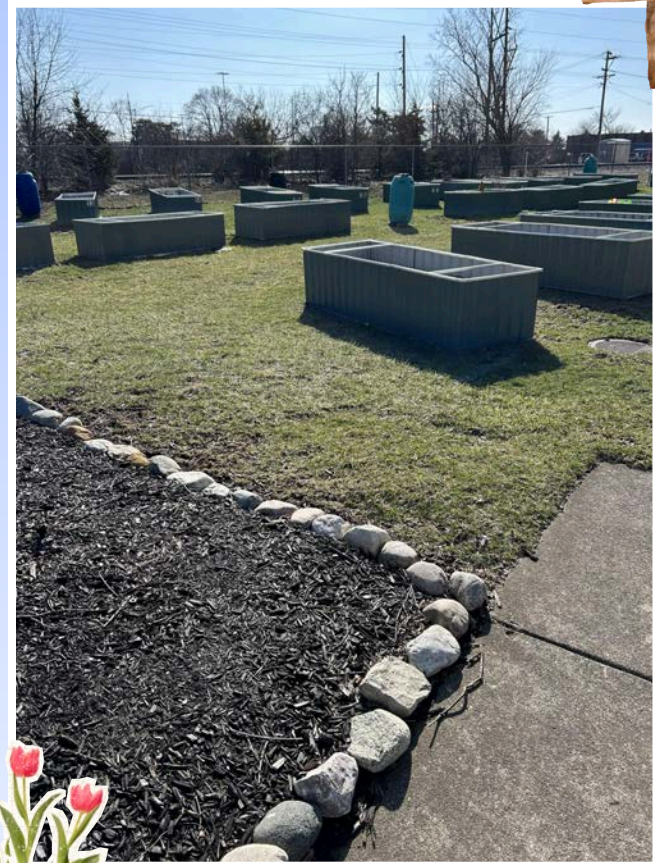
**When:** Tuesdays, starting  
6/9/26

**Where:** Broadview Park  
District Garden; Beverly  
Center

**Min/Max:** 4/12

**Time:** 4-5 p.m. / Ages 8-12;  
5-6 p.m. / 13 & older

**Fee:** \$30



# Wednesday Bowling

## Junior Pin Pals

Nothing to do with your spare time? Try your hand at the target sport of Bowling! All skill levels are welcome.

**Ages:** 8 - 12

**Min/Max:** 4/12

**When:** Wednesdays,  
starting 6/10/26

**Time:** 5 - 6 p.m.

**Where:** Eden Lanes  
Bowling Alley  
10159 W Cermak Rd,  
Westchester, IL 60154

**Fee:** \$60

## Pin Pals

Let's hit the lanes and strike up some good times with a spirited game of ten-pin! All skill levels are welcome.

**Ages:** 13+

**Min/Max:** 4/12

**When:** Wednesdays,  
starting 6/10/26

**Time:** 6 - 7 p.m.

**Where:** Eden Lanes  
Bowling Alley  
10159 W Cermak Rd,  
Westchester, IL 60154

**Fee:** \$60



# Culinary Critics

Are you a culinary critic? Sharpen your financial and social skills by breaking bread at restaurants in the Broadview, Berwyn, Lyons, and Elmhurst corridor. Participants will receive the list of restaurants prior to the start of the program season.

**Ages:** 16+

**Min/Max:** 4/12

**When:** Thursdays, starting 6/11/26

**Time:** 5 – 6:30 p.m.

**Fee:** \$25



# FRIDAY NIGHT SOCIALITES

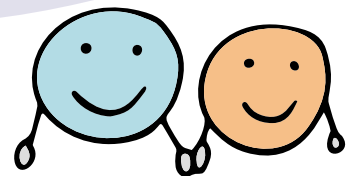
Our Friday Night Socialites (FNS) Program offers teens and adults with disabilities a safe, fun way to connect, build friendships, and explore the community.

From outings and activities to games and social events, it's a great way to gain independence, stay active, and have a blast with friends. Let's have Friday's full of laughter, learning, and lasting memories!

**PLEASE SEE OUR LIST OF OFFERINGS BELOW AND REGISTER FOR AS MANY FRIDAY NIGHTS AS YOU'D LIKE. REGISTRANTS MUST BE 16 YEARS OF AGE OR OLDER. ALL EVENTS WILL BE ON FRIDAY EVENINGS UNLESS NOTED.**

**IF YOU SIGN UP FOR ALL FNS AHEAD OF TIME, YOU GET ALL WEEKS FOR \$145 (INSTEAD OF \$160)**

**\*\*REGISTRATION DEADLINE FOR ALL FRIDAY NIGHT SOCIALITES IS MAY 27, 2026\*\***



FRIDAY NIGHT SOCIALITES	LOCATION	FEE
<p><b>June 12, 2026</b>  <i>Sip and Paint</i>            Come join us for some creativity through painting! Small snacks and beverages will be provided.</p>	<p>Beverly Community Center  <b>5 – 6:30 p.m.</b></p>	<p>\$15  <b>Min/Max:</b>            4/12</p>
<p><b>SATURDAY, June 20, 2026</b>  <i>Juneteenth Celebration</i>            Spend time with the Broadview community celebrating Juneteenth through music, food, and dance!</p>	<p>2600 S 13th Ave            Broadview, IL 60155  <b>3 – 5 p.m.</b></p>	<p>\$15  <b>Min/Max:</b>            4/12</p>
<p><b>June 26, 2026</b>  <i>Movie Night</i>            Enjoy a night out on the town watching a movie with friends!</p>	<p>Classic Cinemas            7501 Cermak Rd,            North Riverside, IL            60546  <b>5 – 7 p.m.</b></p>	<p>\$25  <b>Min/Max:</b>            4/12</p>
<p><b>July 3<sup>rd</sup> – NO FRIDAY ACTIVITIES TODAY</b></p>		
<p><b>July 10, 2026</b>  <i>Haunted Trails Family Entertainment Center – Mini Golf</i>            Let's play some rounds of mini golf at this spooky 18-hole course!</p>	<p>7759 S Harlem Ave,            Burbank, IL 60459  <b>5 – 7 p.m.</b></p>	<p>\$25  <b>Min/Max:</b>            4/12</p>

FRIDAY NIGHT SOCIALITES	LOCATION	FEE
<p><b>July 17, 2026</b>  <i>Outside Picnic</i>  Join us in the outdoor space right outside of Beverly for a picnic, tag, and giant bubbles!</p>	<p>Beverly Community Center  <b>5 - 6:30 p.m.</b></p>	<p>\$15  <b>Min/Max:</b>  4/12</p>
<p><b>July 24, 2026</b>  <i>Escape Factor</i>  Join us for a family-friendly escape room, with interactive puzzles and quests.</p>	<p>7228 Madison St,  Forest Park, IL 60130  <b>5 - 7 p.m.</b></p>	<p>\$25  <b>Min/Max:</b>  4/12</p>
<p><b>July 31, 2026</b>  <i>We Rock the Spectrum Franklin Park</i>  Run around and play at this indoor recreation park that provides learning, exploration, and safe sensory experiences!</p>	<p>10123 Grand Ave,  Franklin Park, IL 60131  <b>4 - 6 p.m.</b></p>	<p>\$25  <b>Min/Max:</b>  4/12</p>
<p><b>Extra Week - August 7, 2026</b>  <i>Back to School Beats (In-House Karaoke)</i>  Come sing live karaoke with us before school starts!</p>	<p>Beverly Community Center  <b>5 - 6:30 p.m.</b></p>	<p>\$15  <b>Min/Max:</b>  4/12</p>



# KAYAKING IN MAYWOOD

Come join us for an adventure out on the water in Maywood, IL. It's a three mile kayak trip from Schuth's Grove to Plank Road Meadow Forest Preserve. Bring your water bottle, sunscreen, and dress appropriately. No experience necessary!

**Where:** Schuth's Grove, 8040 Cermak Rd,  
Forest Park, IL 60546

**When:** Sunday, July 26 and Sunday, August 2, 2026  
(Sign up for either or both days!)

**Ages:** 15+



## **Program Cancellation & Credit Policy**

### **Program Information**

- If no participants arrive within the first 15 minutes at the scheduled program time, the program will be canceled, and staff will be sent home. No credits will be given.
- If the program is canceled, program staff will attempt to reach all participants by phone and email to inform them.
- SRS attempts to extend programs to make up missed dates. You will be notified of program extensions.

All credits/refunds will be reviewed and disbursed after review by the Executive Director.

Please note that a doctor's note may be required with the credit request.

Once a program has begun, no credits will be given.

Out-of-district participants include those not part of the member districts, the corresponding school district, or affiliation with Sertoma Star Services. SRS will accept out-of-district participants into our program with the registration and payment of a \$1,200 annual maintenance fee. This fee, paid to SRS, can be made in installments or all at once. To pay in installments, you must make arrangements with the SRS Program Director.

For additional inquiries, please contact Michael McNicholas at [mmcnicholas@sertomastar.org](mailto:mmcnicholas@sertomastar.org).

# Registration Information

Contact Special Recreation Supervisor Jen Eng at **[jeng@sertomastar.org](mailto:jeng@sertomastar.org)** or **(708) 466-5821**, to schedule an appointment to register for programs. Payment arrangements will be made at the time of registration.

Complete the Annual Information Form, filling in all appropriate spaces. Annual Information Forms are due at the time of registration.

## **Program Registration:**

Checks made out to Sertoma Star Services or cash are accepted. Please write the participant's name on the check. Full payment must be included. You will be notified if a program is canceled or if a participant is placed on a waiting list.

# Registration Information Continued

## **Delinquent Accounts:**

Participants will be denied participation if a balance remains from a previous season, or a late pick-up fee has not been paid. For participants attending a program without prior registration and payment, a \$10 administrative fee will be added to each program that is attended. This fee must be paid in full before registration can be taken.

*If participants miss a program without a 24 hour notice, they will be charged a \$10 fee to their account.*

\*\*Program times subject to change if there are not enough participants for multiple groups\*\*

# SRS North 2026

## Summer Program Registration

Please list each of the programs you are registering for below.  
Payment is due upon registration.

<b>PROGRAM</b>	<b>FEE</b>	<b>PROGRAM</b>	<b>FEE</b>

TOTAL: \_\_\_\_\_ PAID: \_\_\_\_\_ BALANCE DUE: \_\_\_\_\_

# Special Recreation Services of Sertoma Star Services Summer 2026 Registration

SRS requires that the following form be updated seasonally or due to a change in participants' health. Please complete this form entirely, and return it with payment.

You must have a current registration to participate in any SRS activities.

All information is confidential.



## Participant Information:

Name: \_\_\_\_\_

Date of Birth: \_\_\_\_\_

Address: \_\_\_\_\_

City: \_\_\_\_\_ State: \_\_\_\_\_ Zip Code: \_\_\_\_\_

Primary Phone: \_\_\_\_\_ Cell Phone: \_\_\_\_\_

Park District: \_\_\_\_\_ Group Home: \_\_\_\_\_

## Parent/Guardian Information:

Name: \_\_\_\_\_

Address: \_\_\_\_\_

City: \_\_\_\_\_ State: \_\_\_\_\_ Zip Code: \_\_\_\_\_

Primary Phone: \_\_\_\_\_ Cell Phone: \_\_\_\_\_

Email: \_\_\_\_\_

## Emergency Contact Information:

Name: \_\_\_\_\_ Relationship: \_\_\_\_\_

Phone 1: \_\_\_\_\_ Phone 2: \_\_\_\_\_

**Medical Information:**

Physicians Name: \_\_\_\_\_

Hospital: \_\_\_\_\_ Phone: \_\_\_\_\_

Primary Diagnosis: \_\_\_\_\_

Secondary Diagnosis: \_\_\_\_\_

Tertiary Name: \_\_\_\_\_

Seizure Disorder/Type: \_\_\_\_\_

Frequency: \_\_\_\_\_ Duration: \_\_\_\_\_

Seizure Trigger/Warning Signs: \_\_\_\_\_

Other Impairments: \_\_\_\_\_

Allergies: \_\_\_\_\_

Medication (type, dose, and frequency) use separate sheet if needed:

\_\_\_\_\_  
\_\_\_\_\_

Adaptive Equipment Needs:

\_\_\_\_\_  
\_\_\_\_\_

Dietary Restrictions:

\_\_\_\_\_

Daily Living Skills (please circle):

**Eating:**

Independently

Needs Monitoring

Requires Assistance

Explain:

\_\_\_\_\_  
\_\_\_\_\_

**Bathroom:**

Independently

Needs Monitoring

Requires Assistance

Explain:

\_\_\_\_\_  
\_\_\_\_\_

**Dressing:**

Independently

Needs Monitoring

Requires Assistance

Explain:

\_\_\_\_\_  
\_\_\_\_\_

**Mobility:**

Independently

Walker Wheelchair

(manual or electric)

Can the participant transfer? Yes No

Is the participant clear of atlantoaxial instability (AAI)? Yes No

## **Americans with Disabilities Act**

Special Recreation Services of Sertoma Star Services supports the Americans with Disabilities Act (ADA). SRS will provide all reasonable accommodations to include persons with disabilities in the community. It is the belief of SRS that all people are created equal and that they should have equal rights to recreation and leisure opportunities in their communities.

## **Inclusion**

SRS supports programs that allow the participants to perform in the least restrictive environment. Some participants may choose traditional SRS programs, while others may choose park district and recreation department–offered programs. In cooperation with park district/recreation department staff, SRS will provide additional support for all persons interested in inclusion services in park district/recreation department programs.

Contact SRS for additional information.



Sertoma Star Services has a rich history of providing state-of-the-art services and programs for individuals with intellectual/developmental disabilities and those living with mental illness. The organization has provided programs and services to individuals in and around the Chicagoland area and northwest Indiana for a collective 125-plus years.

We support more than 2,000 consumers and have three locations in Illinois – Alsip, Chicago Heights, and Matteson – and an office in Merrillville, Indiana. Our programs are driven by our passion for creating life-changing vocational, educational, therapeutic, and residential opportunities for those we serve.



# SRS

**Special Recreation Services**  
of Sertoma Star Services



**SRS North Campus Office**  
**Beverly Center**  
**3065 S. 25th Avenue**  
**Broadview, IL 60155**  
**(708) 410-0182**

**Serving the park districts of**  
**Broadview, Calumet Memorial, Dolton, Lan-**  
**Oak, Riverdale Park, and the Village of South**  
**Holland Recreational Services Department**

**Visit us online at**  
**<https://sertomastar.org/specialrecreation/>**  
**or call (708) 466-5821**